

Radial Scar

Definition of Terms:

- **Inflammatory** — An irritant that causes swelling and heat to tissues and causes tissue damage
- **Sclerosing** — Hardening of the tissues
- **Spiculated** — Having the appearance of needle-like spicules

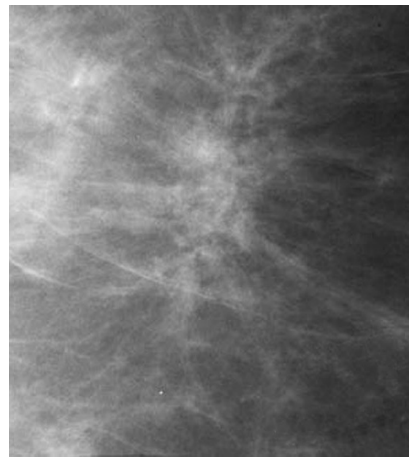
Radial scars, also called complex sclerosing lesions, are most often found during mammography. The lesion appears on the mammography film as a star-shaped, spiculated lesion. The core of the lesion has thin spicules radiating from it.

The majority (75%) of radial scars cannot be felt. They do not cause any visible changes in the breast skin. For patients, they do not cause any symptoms.

It is thought that radial scars are caused by an inflammatory reaction in the breast that damages the cells or by a chronic lack of blood supply to the cells that causes cell death.

Because of the close appearance of a radial scar to breast cancer during mammography, surgical removal for pathology study is usually performed. A pathology diagnosis of a radial scar may increase a woman's future risk of breast cancer.

Radial Scar on Mammography



*Image courtesy of
www.pathologyoutlines.com*

Additional Information:
